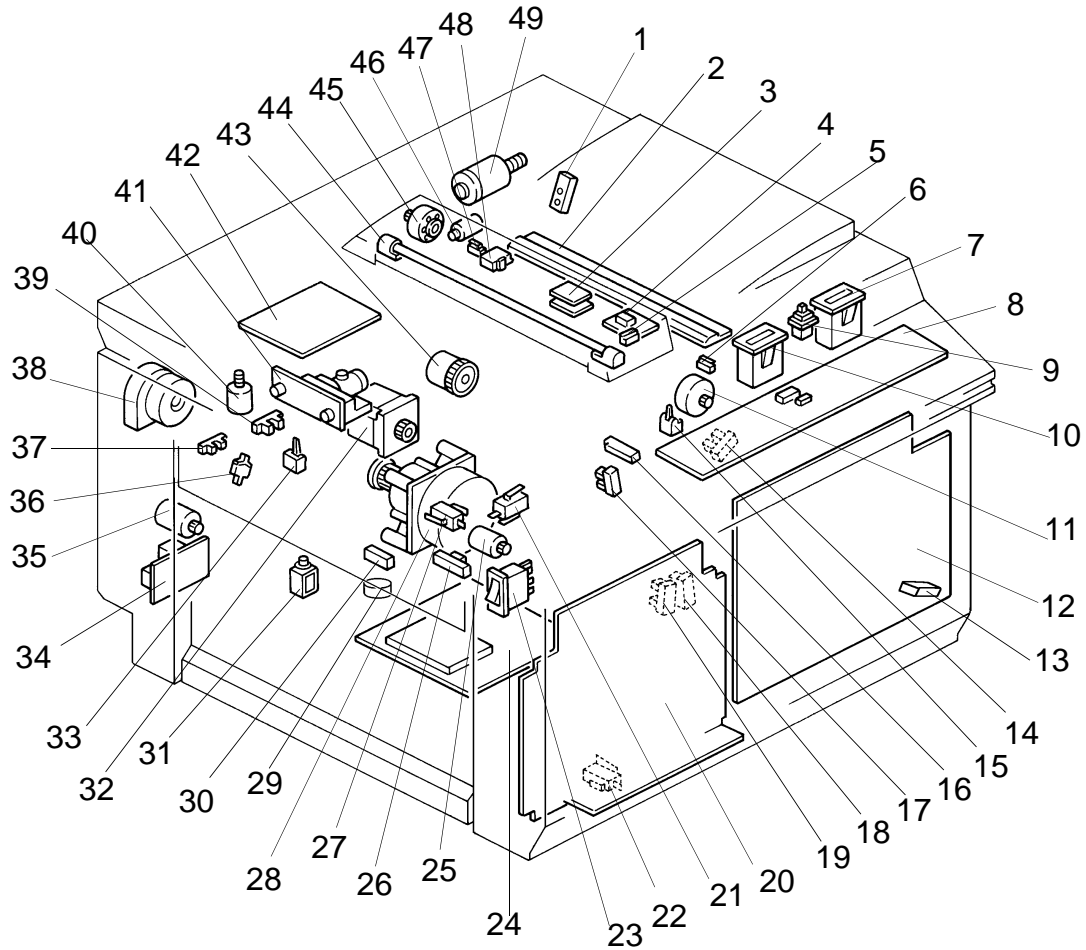


# ELECTRICAL COMPONENT LAYOUT (C225)



Index No.	Name	P to P
<b>Motor</b>		
11	Master Feed	F-5
25	Master Eject	F-6
28	Main	F-2
29	Vacuum	B-7
32	2nd Feed	B-7
35	Master Clamper	B-6
38	Air Knife	B-7
40	Pressure Plate	F-6
45	Original Feed	A-3
46	Master Cutter	F-4
49	Ink Supply	B-6
<b>Solenoid</b>		
31	Pressure Release Solenoid	B-6
<b>Sensors</b>		
1	Master End	F-4
3	Original Registration (Upper: light receiver, Lower: light emitter)	A-2
14	Feed Jam Timing	F-7
15	Paper End	F-7
16	Registration	F-7
17	Feed Start Timing	F-7
18	Exit Jam Timing	F-8
19	Master Eject Position	F-7
26	Drum Master	F-8
30	Exit	B-7
33	Master Eject	F-6
37	Full Master	F-6
39	Pressure Plate H.P.	F-6
48	Original Set	A-3
<b>Switches</b>		
5	ADF Open	A-3
6	Left Cutter	F-5
9	Master Cut	F-5
13	Paper Table Set	F-8
21	Scanner Unit Open	F-1
22	Delivery Cover Open	F-1
23	Main	B-1
27	Master Eject Box	F-1
36	Master Clamper	F-8
47	Right Cutter	F-5

Index No.	Name	P to P
<b>Printed Circuit Board</b>		
4	Lamp Control	B-2
8	Operation Panel	A-5
12	Main	C-5
20	Power Supply	D-1
24	Main Motor Control	E-2
34	Noise Filter	A-1
41	CCD	A-5
42	A/D Conversion	A-4
<b>Counters</b>		
7	Print	F-5
10	Master	F-5
<b>Others</b>		
2	Thermal Head	E-2
43	Paper Feed Clutch	B-6
44	Exposure Lamp	A-2